



Thread gauges





Thread gauges



Thread gauges for female and male threads

In production it's advisable to test thread samples with standardised gauges. We offer a wide range of thread plug gauges and thread ring gauges for the most common thread types and sizes: Metric (M), metric fine (MF), UNC, UNF, G (BSP) pipe threads as well as for NPT threads.

- Thread plug gauge
= for testing female threads
- Thread ring gauge
= for testing male threads

Thread gauges

- Tap extensions acc. to DIN 377
- Squares acc. to DIN 10
- Burnished extensions for taps up to M 52
- Square drive from 2,1 mm up to 32 mm

VÖLKEL Precision thread plug gauge

A thread limit plug gauge is a combination of go plug gauge and no-go plug gauge. The scrap side of the thread plug gauge is marked with a red ring.

The GO end of the thread plug or ring gauge must screw into the thread cut into a part by hand (without using excessive force). If unable to do so, the thread does not meet the requested standards (=scrap).

The NO-GO side of the thread plug or ring gauge must not be able to be manually turned more than two turns into the cut thread (without using excessive force). If it can be screwed in more, the thread does not meet the requested standards (=scrap). The no-go thread gauges are marked in red.

As a manufacturer, VÖLKEL will issue a factory calibration certificate upon request (price on request). Calibrated at a measurement laboratory separate from VÖLKEL to specifications and standards (DIN, ISO, ANSI) specified for the respective specimen. Calibrated using IAC thread scanners.

The reference temperature for parts and gauges is 20° Celsius.



Dimensional accuracy check quick and easy

No matter which production method has been used, checking the dimensional accuracy of the finished thread is a very important criteria for the outcome quality. The surface of a produced thread can be visually inspected quite easy. However, checking the designated tolerance range of the produced thread usually requires very specific measuring equipment or, to keep things simple, VÖLKEL Precision Thread Gauges.

- › Simple to use
- › High accuracy
- › No need for special skills
- › No special measuring equipment necessary
- › Fast testing

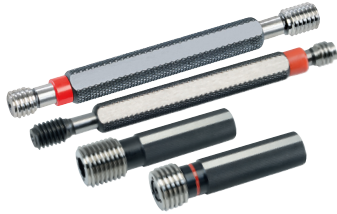


Checking with Precision Thread Plug Gauge

VÖLKEL Precision Thread Gauges are produced according to the norm of the correlating thread type, in accordance to their designated tolerance grade. For production monitoring and for the gauge calibration modern tactile thread scanners are used. This ensures a constantly high level of quality of all VÖLKEL Precision Thread Gauges.



M



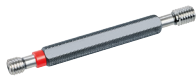
Thread Plug Gauge

metric ISO-thread DIN 13, M1 - M100

Gauge dimension:	Tolerance:	Standard:
DIN ISO 1502/DIN 2240	6H	ISO DIN 13

Variants (49):

DLC-coating: GO gauge coated, thereby evidently longer tool life



Diameter /Pitch	Plug gauge Art.-No.	Plug Gauge DLC Art.-No.
M 1 x 0,25	16000	
M 1.4 x 0,3	16003	
M 1.6 x 0,35	16004	
M 2 x 0,4	16007	
M 2.2 x 0.45	16497	
M 2.3 x 0,4	16498	
M 2.5 x 0,45	16010	
M 2.6 x 0,45	16499	
M 3 x 0,5	16012	16474
M 3.5 x 0,6	16013	
M 4 x 0,7	16014	16475
M 4.5 x 0,75	16500	
M 5 x 0,8	16016	16476
M 5.5 x 0,9	16501	
M 6 x 1,0	16019	16477
M 7 x 1,0	16020	
M 8 x 1,25	16021	16478
M 9 x 1,25	16022	
M 10 x 1,5	16023	16479
M 11 x 1,5	16024	
M 12 x 1,75	16025	16480
M 14 x 2,0	16027	16481
M 16 x 2,0	16028	16482
M 18 x 2,5	16029	
M 20 x 2,5	16030	16483
M 22 x 2,5	16031	
M 24 x 3,0	16032	16484
M 27 x 3,0	16033	
M 30 x 3,5	16034	
M 33 x 3,5	16035	
M 36 x 4,0	16036	

Diameter /Pitch	GO Plug Gauge Art.-No.	NO GO Plug Gauge Art.-No.
M 39 x4	16142	16164
M 42 x 4,5	16143	16165
M 45 x 4,5	16144	16166
M 48 x 5	16145	16167
M 52 x 5	16593	16747
M 56 x 5,5	16594	16748
M 60 x 5,5	16595	16749
M 64 x 6	16596	16750
M 68 x 6	16597	16751
M 72 x 6	16598	16752
M 76 x 6	16599	16753
M 80 x 6	16600	16754
M 84 x 6	16601	16755
M 88 x 6	16602	16756
M 90 x 6	16603	16757
M 92 x 6	16604	16758
M 96 x 6	16605	16759
M 100 x 6	16606	16760



Thread Plug Gauge, DLC GO-NOGO

metric ISO-thread DIN 13, M3 - M24

Gauge dimension:	Tolerance:	Standard:
DIN ISO 1502/DIN 2240	6H	ISO DIN 13
Variants (11):		

Thread Plug Gauge GO-NOGO Art.-No.

M 3 x 0,5	16474
M 4 x 0,7	16475
M 5 x 0,8	16476
M 6 x 1,0	16477
M 8 x 1,25	16478
M 10 x 1,5	16479

Thread Plug Gauge GO-NOGO Art.-No.

M 12 x 1,75	16480
M 14 x 2,0	16481
M 16 x 2,0	16482
M 20 x 2,5	16483
M 24 x 3,0	16484



Thread Plug Gauge

metric ISO-thread DIN 13, M2,5 - M20

Gauge dimension:	Tolerance:	Standard:
DIN ISO 1502	6H	ISO DIN 13
Variants (12):		

Diameter /Pitch	Plug Gauge Tol. 7G Art.-No.	Plug Gauge Tol. 6G Art.-No.	Plug Gauge Tol. 6H + 0,1 mm Art.-No.	Plug Gauge Tol. 4H Art.-No.
M 2.5 x 0,45		17407		
M 3 x 0,5	17400	17408	17419	17426
M 4 x 0,7	17401	17409	17420	17427
M 5 x 0,8	17402	17410	17421	17428
M 6 x 1	17403	17411	17422	17429
M 8 x 1,25	17404	17412	17423	17430
M 10 x 1,5	17405	17413	17424	17431
M 12 x 1,75	17406	17414	17425	17432
M 14 x 2		17415		17433
M 16 x 2		17416		17434
M 18 x 2,5		17417		
M 20 x 2,5		17418		



GO Thread Plug Gauge

metric ISO-thread DIN 13, M39 - M48

Gauge dimension:	Tolerance:	Standard:
DIN ISO 1502/DIN 2240	6H	ISO DIN 13

Variants (4):

GO Thread Plug Gauge

M 39 x 4,0

M 42 x 4,5

Art.-No.

[16160](#)

[16161](#)

GO Thread Plug Gauge

M 45 x 4,5

M 48 x 5,0

Art.-No.

[16162](#)

[16163](#)



NO-GO Thread Plug Gauge

metric ISO-thread DIN 13, M39 - M48

Gauge dimension:	Tolerance:	Standard:
DIN ISO 1502/DIN 2240	6H	ISO DIN 13

Variants (4):

NO-GO Thread Plug Gauge

M 39 x 4,0

M 42 x 4,5

Art.-No.

[16164](#)

[16165](#)

NO-GO Thread Plug Gauge

M 45 x 4,5

M 48 x 5,0

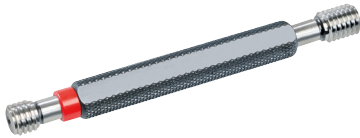
Art.-No.

[16166](#)

[16167](#)



Mf



Thread Plug Gauge GO-NOGO

metric-fine ISO-thread DIN 13, M2 - M40

Gauge dimension:	Tolerance:	Standard:
DIN ISO 1502	6H	ISO DIN 13
Variants (133):		

Diameter /Pitch	Plug Gauge Art.-No.	Diameter /Pitch	Plug Gauge Art.-No.	Diameter /Pitch	Plug Gauge Art.-No.	Diameter /Pitch	Plug Gauge Art.-No.
M 2 x 0,35	16037	M 12 x 1,5	16058	21 x 1	16537	M 32 x 1	16553
M 2.5 x 0,35	16038	M 13 x 0,5	16515	21 x 1,5	16538	M 32 x 1,5	16088
M 2.6 x 0,35	16502	M 13 x 0,75	16516	22 x 0,5	16539	M 32 x 2	16554
M 3 x 0,35	16039	M 13 x 1	16517	22 x 0,75	16540	M 32 x 3	16555
M 3.5 x 0,35	16040	M 13 x 1,5	16518	M 22 x 1,0	16070	M 33 x 1,5	16089
M 4 x 0,35	16041	M 14 x 0,5	16519	M 22 x 1,25	16541	M 33 x 2,0	16090
M 4 x 0,5	16042	M 14 x 0,75	16520	M 22 x 1,5	16071	M 33 x 3,0	16091
M 4.5 x 0,5	16503	M 14 x 1,0	16059	M 22 x 2,0	16072	M 34 x 1	16556
M 5 x 0,35	16043	M 14 x 1,25	16060	M 23 x 1	16542	M 34 x 1,5	16092
M 5 x 0,5	16044	M 14 x 1,5	16061	M 23 x 1,5	16543	M 34 x 2,0	16093
M 5 x 0,75	16504	M 15 x 0,75	16521	M 24 x 0,5	16544	M 34 x 3,0	16094
M 5.5 x 0,5	16505	M 15 x 1	16522	M 24 x 0,75	16545	M 35 x 1	16557
M 6 x 0,35	16045	M 15 x 1,5	16523	M 24 x 1,0	16073	M 35 x 1,5	16095
M 6 x 0,5	16046	M 16 x 0,5	16524	M 24 x 1,25	16546	M 35 x 2,0	16096
M 6 x 0,75	16047	M 16 x 0,75	16525	M 24 x 1,5	16074	M 35 x 3,0	16097
M 7 x 0,5	16506	M 16 x 1,0	16062	M 24 x 2,0	16075	M 36 x 1	16558
M 7 x 0,75	16507	M 16 x 1,25	16526	M 25 x 1,0	16076	M 36 x 1,5	16098
M 8 x 0,5	16048	M 16 x 1,5	16063	M 25 x 1,5	16077	M 36 x 2,0	16099
M 8 x 0,75	16049	M 17 x 1	16527	M 25 x 2,0	16078	M 36 x 3,0	16100
M 8 x 1,0	16050	M 17 x 1,5	16528	M 26 x 1	16547	M 37 x 1,5	16559
M 9 x 0,5	16508	M 18 x 0,5	16529	M 26 x 1,5	16079	M 38 x 1	16560
M 9 x 0,75	16509	M 18 x 0,75	16530	M 26 x 2	16548	M 38 x 1,5	16101
M 9 x 1	16510	M 18 x 1,0	16064	M 27 x 1,0	16080	M 38 x 2	16561
M 10 x 0,5	16511	M 18 x 1,25	16531	M 27 x 1,5	16081	M 38 x 3	16562
M 10 x 0,75	16051	M 18 x 1,5	16065	M 27 x 2,0	16082	M 39 x 1,5	16563
M 10 x 1,0	16052	M 18 x 2,0	16066	M 28 x 1	16549	M 39 x 2	16564
M 10 x 1,25	16053	M 19 x 1	16532	M 28 x 1,5	16083	M 39 x 3	16565
M 11 x 0,75	16512	M 19 x 1,5	16533	M 28 x 2	16550	M 40 x 1	16566
M 11 x 1	16513	M 20 x 0,5	16534	M 29 x 1,5	16551	M 40 x 1,5	16102
M 11 x 1,25	16514	M 20 x 0,75	16535	M 30 x 1,0	16084	M 40 x 2,0	16103
M 12 x 0,5	16056	M 20 x 1,0	16067	M 30 x 1,5	16085	M 40 x 3	16567
M 12 x 0,75	16054	M 20 x 1,25	16536	M 30 x 2,0	16086		
M 12 x 1,0	16055	M 20 x 1,5	16068	M 30 x 2,5	16552		
M 12 x 1,25	16057	M 20 x 2,0	16069	M 30 x 3,0	16087		



GO/NO-GO Thread Plug Gauge

metric-fine ISO-thread DIN 13, M42 - M110

Gauge dimension:	Tolerance:	Standard:
DIN ISO 1502	6H	ISO DIN 13
Variants (141):		

Diameter /Pitch	GO Art.-No.	NO-GO Art.-No.	Diameter /Pitch	GO Art.-No.	NO-GO Art.-No.	Diameter /Pitch	GO Art.-No.	NO-GO Art.-No.
M 42 x 1	16607	16761	M 56 x 4	16628	16782	M 72 x 4	16660	16814
M 42 x 1,5	16146	16168	M 58 x 1	16629	16783	M 74 x 1,5	16661	16815
M 42 x 2,0	16147	16169	M 58 x 1,5	16158	16180	M 74 x 2	16662	16816
M 42 x 3	16608	16762	M 58 x 2	16630	16784	M 74 x 3	16663	16817
M 44 x 1,5	16609	16763	M 58 x 3	16631	16785	M 74 x 4	16664	16818
M 44 x 2	16610	16764	M 58 x 4	16632	16786	M 75 x 1,5	16665	16819
M 45 x 1	16611	16765	M 60 x 1,5	16633	16787	M 75 x 2	16666	16820
M 45 x 1,5	16148	16170	M 60 x 2,0	16159	16181	M 75 x 3	16667	16821
M 45 x 2,0	16149	16171	M 60 x 3	16634	16788	M 75 x 4	16668	16822
M 45 x 3	16612	16766	M 60 x 4	16635	16789	M 76 x 1,5	16669	16823
M 46 x 1,5	16613	16767	M 62 x 1,5	16636	16790	M 76 x 2	16670	16824
M 48 x 1	16614	16768	M 62 x 2	16637	16791	M 76 x 3	16671	16825
M 48 x 1,5	16150	16172	M 62 x 3	16638	16792	M 76 x 4	16672	16826
M 48 x 2,0	16151	16173	M 62 x 4	16639	16793	M 78 x 1,5	16673	16827
M 48 x 3	16615	16769	M 63 x 1,5	16640	16794	M 78 x 2	16674	16828
M 50 x 1,5	16152	16174	M 64 x 1,5	16641	16795	M 78 x 3	16675	16829
M 50 x 2,0	16153	16175	M 64 x 2	16642	16796	M 78 x 4	16676	16830
M 50 x 3	16616	16770	M 64 x 3	16643	16797	M 80 x 1,5	16677	16831
M 52 x 1,5	16154	16176	M 64 x 4	16644	16798	M 80 x 2	16678	16832
M 52 x 2,0	16155	16177	M 65 x 1,5	16645	16799	M 80 x 3	16679	16833
M 52 x 3	16617	16771	M 65 x 2	16646	16800	M 80 x 4	16680	16834
M 54 x 1	16493	16494	M 65 x 3	16647	16801	M 82 x 1,5	16681	16835
M 54 x 1,5	16618	16772	M 65 x 4	16648	16802	M 82 x 2	16682	16836
M 54 x 2	16619	16773	M 68 x 1,5	16649	16803	M 82 x 3	16683	16837
M 54 x 3	16620	16774	M 68 x 2	16650	16804	M 82 x 4	16684	16838
M 54 x 4	16621	16775	M 68 x 3	16651	16805	M 84 x 1,5	16685	16839
M 55 x 1,5	16156	16178	M 68 x 4	16652	16806	M 84 x 2	16686	16840
M 55 x 2,0	16157	16179	M 70 x 1,5	16653	16807	M 84 x 3	16687	16841
M 55 x 3	16622	16776	M 70 x 2	16654	16808	M 84 x 4	16688	16842
M 55 x 4	16623	16777	M 70 x 3	16655	16809	M 85 x 1,5	16689	16843
M 56 x 1	16624	16778	M 70 x 4	16656	16810	M 85 x 2	16690	16844
M 56 x 1,5	16625	16779	M 72 x 1,5	16657	16811	M 85 x 3	16691	16845
M 56 x 2	16626	16780	M 72 x 2	16658	16812	M 85 x 4	16692	16846
M 56 x 3	16627	16781	M 72 x 3	16659	16813	M 86 x 1,5	16693	16847



Diameter /Pitch	GO Art.-No.	NO-GO Art.-No.	Diameter /Pitch	GO Art.-No.	NO-GO Art.-No.	Diameter /Pitch	GO Art.-No.	NO-GO Art.-No.
M 86 x 2	16694	16848	M 92 x 3	16707	16861	M 98 x 4	16720	16874
M 86 x 3	16695	16849	M 92 x 4	16708	16862	M 100 x 1,5	16721	16875
M 86 x 4	16696	16850	M 95 x 1,5	16709	16863	M 100 x 2	16722	16876
M 88 x 1,5	16697	16851	M 95 x 2	16710	16864	M 100 x 3	16723	16877
M 88 x 2	16698	16852	M 95 x 3	16711	16865	M 100 x 4	16724	16878
M 88 x 3	16699	16853	M 95 x 4	16712	16866	M 105 x 1,5	16725	16879
M 88 x 4	16700	16854	M 96 x 1,5	16713	16867	M 105 x 2	16726	16880
M 90 x 1,5	16701	16855	M 96 x 2	16714	16868	M 105 x 3	16727	16881
M 90 x 2	16702	16856	M 96 x 3	16715	16869	M 105 x 4	16728	16882
M 90 x 3	16703	16857	M 96 x 4	16716	16870	M 110 x 1,5	16729	16883
M 90 x 4	16704	16858	M 98 x 1,5	16717	16871	M 110 x 2	16730	16884
M 92 x 1,5	16705	16859	M 98 x 2	16718	16872	M 110 x 3	16731	16885
M 92 x 2	16706	16860	M 98 x 3	16719	16873	M 110 x 4	16732	16886



UNC



Thread Plug Gauge/GO/NO-GO

Unified Coarse Thread ANSI B 1.1 (UNC)

Gauge dimension: Unified Coarse Thread ANSI B1.2 2B Tolerance: 2B Standard: ANSI B 1.1

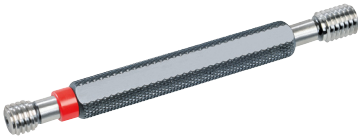
Variants (30):



Diameter /Pitch	Art.-No.	GO Art.-No.	NO-GO Art.-No.
UNC Nr. 2 x 56	16568		
UNC Nr. 3 x 48	16569		
UNC Nr. 4 x 40	16104		
UNC Nr. 5 x 40	16570		
UNC Nr. 6 x 32	16105		
UNC Nr. 8 x 32	16106		
UNC Nr. 10 x 24	16107		
UNC Nr. 12 x 24	16571		
UNC 1/4 x 20	16108		
UNC 5/16 x 18	16109		
UNC 3/8 x 16	16110		
UNC 7/16 x 14	16111		
UNC 1/2 x 13	16112		
UNC 9/16 x 12	16113		
UNC 5/8 x 11	16114		
UNC 3/4 x 10	16115		
UNC 7/8 x 9	16572		
UNC 1" x 8	16573		
UNC 1.1/8 x 7	16574		
UNC 1.1/4 x 7	16575		
UNC 1.3/8 x 6	16576		
UNC 1.1/2 x 6	16577		
UNC 1.5/8 x 5		16733	16887
UNC 1.3/4 x 5		16734	16888
UNC 1.7/8 x 4,5		16735	16889
UNC 2" x 4,5		16736	16890
UNC 2.1/4x 4,5		16737	16891
UNC 2.1/2 x 4		16738	16892
UNC 2.3/4 x 4		16739	16893
UNC 3" x 4		16740	16894



UNF



Thread Plug Gauge

Unified Fine Thread ANSI B 1.1 (UNF)

Gauge dimension:	Tolerance:	Standard:
Unified Fine Thread ANSI B1.2	2B	ANSI B 1.1
Variants (23):		

Diameter /Pitch	Art.-No.
UNF Nr. 2 x 64	16578
UNF Nr. 3 x 56	16579
UNF Nr. 4 x 48	16116
UNF Nr. 5 x 44	16580
UNF Nr. 6 x 40	16117
UNF Nr. 8 x 36	16118
UNF Nr. 10 x 32	16119
UNF Nr. 12 x 28	16581
UNF 1/4 x 28	16120
UNF 5/16 x 24	16121
UNF 3/8 x 24	16122
UNF 7/16 x 20	16123
UNF 1/2 x 20	16124
UNF 9/16 x 18	16125
UNF 5/8 x 18	16126
UNF 3/4 x 16	16127
UNF 7/8 x 14	16582
UNF 1" x 12	16583
UNF 1" x 14	16584
UNF 1.1/8 x 12	16585
UNF 1.1/4 x 12	16586
UNF 1.3/8 x 12	16587
UNF 1.1/2 x 12	16588



G (BSP)



Thread Plug Gauge/GO/NO-GO

Pipe-thread DIN ISO 228

Gauge dimension:

DIN EN ISO 228-2

Standard:

DIN ISO 228

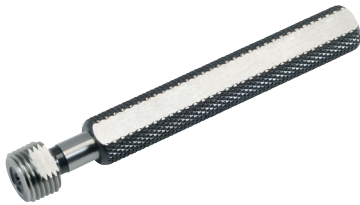
Variants (19):



Diameter /Pitch	Art.-No.	GO Art.-No.	NO-GO Art.-No.
G 1/8 x 28	16128		
G 1/4 x 19	16129		
G 3/8 x 19	16130		
G 1/2 x 14	16131		
G 5/8 x 14	16132		
G 3/4 x 14	16133		
G 7/8 x 14	16134		
G 1" x 11	16135		
G 1.1/8 x 11	16589		
G 1.1/4 x 11		16160	16182
G 1.1/2 x 11		16161	16183
G 1.3/4 x 11		16162	16184
G 2" x 11		16163	16185
G 2.1/4 x 11		16741	16895
G 2.1/2 x 11		16742	16896
G 2.3/4 x 11		16743	16897
G 3" x 11		16744	16898
G 3.1/2 x 11		16745	16899
G 4" x 11		16746	16900



NPT



Thread Plug Gauge

American tapered pipe thread, taper 1:16 (NPT)

Gauge dimension:	Standard:
ANSI/ASME B 1.20.1	taper 1:16

Variants (9):

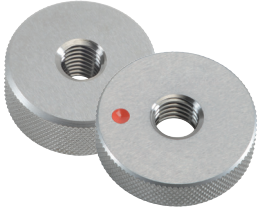
VÖLKEL Precision thread plug gauge - Additional comment:

Combinded GO and NO-GO plug gauge for NPT female threads.

Diameter /Pitch	GO Art.-No.
NPT 1/8 x 27	16136
NPT 1/4 x 18	16137
NPT 3/8 x 18	16138
NPT 1/2 x 14	16139
NPT 3/4 x 14	16140
NPT 1" x 11,5	16141
NPT 1.1/4 x 11,5	16590
NPT 1.1/2 x 11,5	16591
NPT 2" x 11,5	16592

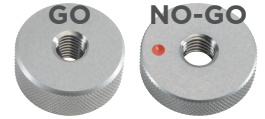


M



GO/NO-GO Thread Ring Gauge

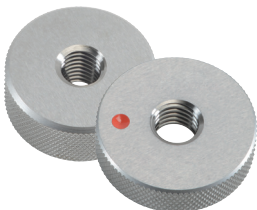
metric ISO-thread DIN 13



Gauge dimension: DIN ISO 1502 Tolerance: 6g Standard: ISO DIN 13

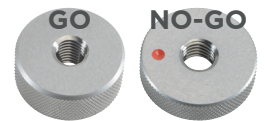
Variants (46):

Diameter /Pitch	GO Art.-No.	NO-GO Art.-No.	Diameter /Pitch	GO Art.-No.	NO-GO Art.-No.	Diameter /Pitch	GO Art.-No.	NO-GO Art.-No.
M 2 x 0,4	16186	16330	M 11 x 1,5	16197	16341	M 52 x 5	16906	17153
M 2.2 x 0,45	16901	17148	M 12 x 1,75	16198	16342	M 56 x 5,5	16907	17154
M 2.3 x 0,4	16902	17149	M 14 x 2	16199	16343	M 60 x 5,5	16908	17155
M 2.5 x 0,45	16187	16331	M 16 x 2	16200	16344	M 64 x 6	16909	17156
M 2.6 x 0,45	16903	17150	M 18 x 2,5	16201	16345	M 68 x 6	16910	17157
M 3 x 0,5	16188	16332	M 20 x 2,5	16202	16346	M 72 x 6	16911	17158
M 3.5 x 0,6	16189	16333	M 22 x 2,5	16203	16347	M 76 x 6	16912	17159
M 4 x 0,7	16190	16334	M 24 x 3	16204	16348	M 80 x 6	16913	17160
M 4.5 x 0,75	16904	17151	M 27 x 3	16205	16349	M 84 x 6	16914	17161
M 5 x 0,8	16191	16335	M 30 x 3,5	16206	16350	M 88 x 6	16915	17162
M 5.5 x 0,9	16905	17152	M 33 x 3,5	16207	16351	M 90 x 6	16916	17163
M 6 x 1	16192	16336	M 36 x 4	16208	16352	M 92 x 6	16917	17164
M 7 x 1	16193	16337	M 39 x 4	16209	16353	M 96 x 6	16918	17165
M 8 x 1,25	16194	16338	M 42 x 4,5	16210	16354	M 100 x 6	16919	17166
M 9 x 1,25	16195	16339	M 45 x 4,5	16211	16355			
M 10 x 1,5	16196	16340	M 48 x 5	16212	16356			



GO/NO-GO Thread Ring Gauge

metric ISO-thread DIN 13



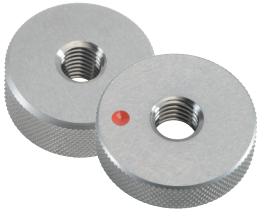
Gauge dimension: DIN ISO 1502 Tolerance: 6e Standard: ISO DIN 13

Variants (11):

Diameter /Pitch	GO Art.-No.	NO-GO Art.-No.	Diameter /Pitch	GO Art.-No.	NO-GO Art.-No.
M 3 x 0,5	17435	17446	M 12 x 1,75	17441	17452
M 4 x 0,7	17436	17447	M 14 x 2	17442	17453
M 5 x 0,8	17437	17448	M 16 x 2	17443	17454
M 6 x 1	17438	17449	M 18 x 2,5	17444	17455
M 8 x 1,25	17439	17450	M 20 x 2,5	17445	17456
M 10 x 1,5	17440	17451			

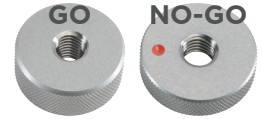


Mf



GO/NO-GO Thread Ring Gauge

metric-fine ISO-thread DIN 13



Gauge dimension: DIN ISO 1502 Tolerance: 6g Standard: ISO DIN 13

Variants (274):

Diameter /Pitch	GO Art.-No.	NO-GO Art.-No.	Diameter /Pitch	GO Art.-No.	NO-GO Art.-No.	Diameter /Pitch	GO Art.-No.	NO-GO Art.-No.
M 2 x 0,35	16213	16357	M 12 x 1,5	16234	16378	M 21 x 1	16955	17202
M 2.5 x 0,35	16214	16358	M 13 x 0,5	16933	17180	M 21 x 1,5	16956	17203
M 2.6 x 0,35	16920	17167	M 13 x 0,75	16934	17181	M 22 x 0,5	16957	17204
M 3 x 0,35	16215	16359	M 13 x 1	16935	17182	M 22 x 0,75	16958	17205
M 3.5 x 0,35	16216	16360	M 13 x 1,5	16936	17183	M 22 x 1	16246	16390
M 4 x 0,35	16217	16361	M 14 x 0,5	16937	17184	M 22 x 1,25	16959	17206
M 4 x 0,5	16218	16362	M 14 x 0,75	16938	17185	M 22 x 1,5	16247	16391
M 4.5 x 0,5	16921	17168	M 14 x 1,0	16235	16379	M 22 x 2	16248	16392
M 5 x 0,35	16219	16363	M 14 x 1,25	16236	16380	M 23 x 1	16960	17207
M 5 x 0,5	16220	16364	M 14 x 1,5	16237	16381	M 23 x 1,5	16961	17208
M 5 x 0,75	16922	17169	M 15 x 0,75	16939	17186	M 24 x 0,5	16962	17209
M 5.5 x 0,5	16923	17170	M 15 x 1	16940	17187	M 24 x 0,75	16963	17210
M 6 x 0,35	16221	16365	M 15 x 1,5	16941	17188	M 24 x 1	16249	16393
M 6 x 0,5	16222	16366	M 16 x 0,5	16942	17189	M 24 x 1,25	16964	17211
M 6 x 0,75	16223	16367	M 16 x 0,75	16943	17190	M 24 x 1,5	16250	16394
M 7 x 0,5	16924	17171	M 16 x 1	16238	16382	M 24 x 2	16251	16395
M 7 x 0,75	16925	17172	M 16 x 1,25	16944	17191	M 25 x 1	16252	16396
M 8 x 0,5	16224	16368	M 16 x 1,5	16239	16383	M 25 x 1,5	16253	16397
M 8 x 0,75	16225	16369	M 17 x 1	16945	17192	M 25 x 2	16254	16398
M 8 x 1,0	16226	16370	M 17 x 1,5	16946	17193	M 26 x 1	16965	17212
M 9 x 0,5	16926	17173	M 18 x 0,5	16947	17194	M 26 x 1,5	16255	16399
M 9 x 0,75	16927	17174	M 18 x 0,75	16948	17195	M 26 x 2	16966	17213
M 9 x 1	16928	17175	M 18 x 1	16240	16384	M 27 x 1	16256	16400
M 10 x 0,5	16929	17176	M 18 x 1,25	16949	17196	M 27 x 1,5	16257	16401
M 10 x 0,75	16227	16371	M 18 x 1,5	16241	16385	M 27 x 2	16258	16402
M 10 x 1,0	16228	16372	M 18 x 2	16242	16386	M 28 x 1	16967	17214
M 10 x 1,25	16229	16373	M 19 x 1	16950	17197	M 28 x 1,5	16259	16403
M 11 x 0,75	16930	17177	M 19 x 1,5	16951	17198	M 28 x 2	16968	17215
M 11 x 1	16931	17178	M 20 x 0,5	16952	17199	M 29 x 1,5	16969	17216
M 11 x 1,25	16932	17179	M 20 x 0,75	16953	17200	M 30 x 1	16260	16404
M 12 x 0,5	16232	16376	M 20 x 1	16243	16387	M 30 x 1,5	16261	16405
M 12 x 0,75	16230	16374	M 20 x 1,25	16954	17201	M 30 x 2	16262	16406
M 12 x 1,0	16231	16375	M 20 x 1,5	16244	16388	M 30 x 2,5	16970	17217
M 12 x 1,25	16233	16377	M 20 x 2	16245	16389	M 30 x 3	16263	16407



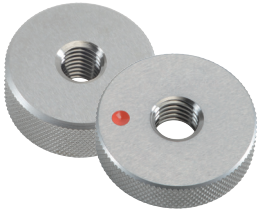
Diameter /Pitch	GO Art.-No.	NO-GO Art.-No.	Diameter /Pitch	GO Art.-No.	NO-GO Art.-No.	Diameter /Pitch	GO Art.-No.	NO-GO Art.-No.
M 32 x 1	16971	17218	M 48 x 3	16994	17241	M 68 x 3	17030	17277
M 32 x 1,5	16264	16408	M 50 x 1,5	16286	16430	M 68 x 4	17031	17278
M 32 x 2	16972	17219	M 50 x 2	16287	16431	M 70 x 1,5	07032	17279
M 32 x 3	16973	17220	M 50 x 3	16995	17242	M 70 x 2	17033	17280
M 33 x 1,5	16265	16409	M 52 x 1,5	16288	16432	M 70 x 3	17034	17281
M 33 x 2	16266	16410	M 52 x 2	16289	16433	M 70 x 4	17035	17282
M 33 x 3	16267	16411	M 52 x 3	16996	17243	M 72 x 1,5	17036	17283
M 34 x 1	16974	17221	M 54 x 1	16495	16496	M 72 x 2	17037	17284
M 34 x 1,5	16268	16412	M 54 x 1,5	16997	17244	M 72 x 3	17038	17285
M 34 x 2	16269	16413	M 54 x 2	16998	17245	M 72 x 4	17039	17286
M 34 x 3	16270	16414	M 54 x 3	16999	17246	M 74 x 1,5	17040	17287
M 35 x 1	16975	17222	M 54 x 4	17000	17247	M 74 x 2	17041	17288
M 35 x 1,5	16271	16415	M 55 x 1,5	16290	16434	M 74 x 3	17042	17289
M 35 x 2	16272	16416	M 55 x 2	16291	16435	M 74 x 4	17043	17290
M 35 x 3	16273	16417	M 55 x 3	17001	17248	M 75 x 1,5	17044	17291
M 36 x 1	16976	17223	M 55 x 4	17002	17249	M 75 x 2	17045	17292
M 36 x 1,5	16274	16418	M 56 x 1	17003	17250	M 75 x 3	17046	17293
M 36 x 2	16275	16419	M 56 x 1,5	17004	17251	M 75 x 4	17047	17294
M 36 x 3	16276	16420	M 56 x 2	17005	17252	M 76 x 1,5	17048	17295
M 37 x 1,5	16799	17224	M 56 x 3	17006	17253	M 76 x 2	17049	17296
M 38 x 1	16978	17225	M 56 x 4	17007	17254	M 76 x 3	17050	17297
M 38 x 1,5	16277	16421	M 58 x 1	17008	17255	M 76 x 4	17051	17298
M 38 x 2	16979	17226	M 58 x 1,5	16292	16436	M 78 x 1,5	17052	17299
M 38 x 3	16980	17227	M 58 x 2	17009	17256	M 78 x 2	17053	17300
M 39 x 1,5	16981	17228	M 58 x 3	17010	17257	M 78 x 3	17054	17301
M 39 x 2	16982	17229	M 58 x 4	17011	17258	M 78 x 4	17055	17302
M 39 x 3	16983	17230	M 60 x 1,5	17012	17259	M 80 x 1,5	17056	17303
M 40 x 1	16984	17231	M 60 x 2	16293	16437	M 80 x 2	17057	17304
M 40 x 1,5	16278	16422	M 60 x 3	17013	17260	M 80 x 3	17058	17305
M 40 x 2	16279	16423	M 60 x 4	17014	17261	M 80 x 4	17059	17306
M 40 x 3	16985	17232	M 62 x 1,5	17015	17262	M 82 x 1,5	17060	17307
M 42 x 1	16986	17233	M 62 x 2	17016	17263	M 82 x 2	17061	17308
M 42 x 1,5	16280	16424	M 62 x 3	17017	17264	M 82 x 3	17062	17309
M 42 x 2	16281	16425	M 62 x 4	17018	17265	M 82 x 4	17063	17310
M 42 x 3	16987	17234	M 63 x 1,5	17019	17266	M 84 x 1,5	17064	17311
M 44 x 1,5	16988	17235	M 64 x 1,5	17020	17267	M 84 x 2	17065	17312
M 44 x 2	16989	17236	M 64 x 2	17021	17268	M 84 x 3	17066	17313
M 45 x 1	16990	17237	M 64 x 3	17022	17269	M 84 x 4	17067	17314
M 45 x 1,5	16282	16426	M 64 x 4	17023	17270	M 85 x 1,5	17068	17315
M 45 x 2	16283	16427	M 65 x 1,5	17024	17271	M 85 x 2	17069	17316
M 45 x 3	16991	17238	M 65 x 2	17025	17272	M 85 x 3	17070	17317
M 46 x 1,5	16992	17239	M 65 x 3	17026	17273	M 85 x 4	17071	17318
M 48 x 1	16993	17240	M 65 x 4	17027	17274	M 86 x 1,5	17072	17319
M 48 x 1,5	16284	16428	M 68 x 1,5	17028	17275	M 86 x 2	17073	17320
M 48 x 2	16285	16429	M 68 x 2	17029	17276	M 86 x 3	17074	17321



Diameter /Pitch	GO Art.-No.	NO-GO Art.-No.
M 86 x 4	17075	17322
M 88 x 1,5	17076	17323
M 88 x 2	17077	17324
M 88 x 3	17078	17325
M 88 x 4	17079	17326
M 90 x 1,5	17080	17327
M 90 x 2	17081	17328
M 90 x 3	17082	17329
M 90 x 4	17083	17330
M 92 x 1,5	17084	17331
M 92 x 2	17085	17332
M 92 x 3	17086	17333
M 92 x 4	17087	17334
M 95 x 1,5	17088	17335
M 95 x 2	17089	17336
M 95 x 3	17090	17337
M 95 x 4	17091	17338
M 96 x 1,5	17092	17339
M 96 x 2	17093	17340
M 96 x 3	17094	17341
M 96 x 4	17095	17342
M 98 x 1,5	17096	17343
M 98 x 2	17097	17344
M 98 x 3	17098	17345
M 98 x 4	17099	17346
M 100 x 1,5	17100	17347
M 100 x 2	17101	17348
M 100 x 3	17102	17349
M 100 x 4	17103	17350
M 105 x 1,5	17104	17351
M 105 x 2	17105	17352
M 105 x 3	17106	17353
M 105 x 4	17107	17354
M 110 x 1,5	17108	17355
M 110 x 2	17109	17356
M 110 x 3	17110	17357
M 110 x 4	17111	17358

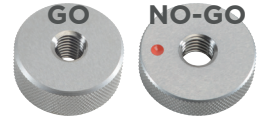


UNC



GO/NO-GO Thread Ring Gauge

Unified Coarse Thread ANSI B1.1



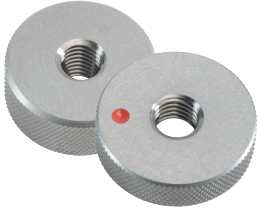
Gauge dimension:	Tolerance:	Standard:
ANSI B 1.2	2A	ANSI B1.1

Variants (30):

Diameter /Pitch	GO Art.-No.	NO-GO Art.-No.	Diameter /Pitch	GO Art.-No.	NO-GO Art.-No.
UNC Nr. 2 x 56	17112	17359	UNC 3/4 x 10	16305	16449
UNC Nr. 3 x 48	17113	17360	UNC 7/8 x 9	17116	17363
UNC Nr. 4 x 40	16294	16438	UNC 1" x 8	17117	17364
UNC Nr. 5 x 40	17114	17361	UNC 1.1/8 x 7	17118	17365
UNC Nr. 6 x 32	16295	16439	UNC 1.1/4 x 7	17119	17366
UNC Nr. 8 x 32	16296	16440	UNC 1.3/8 x 6	17120	17367
UNC Nr. 10 x 24	16297	16441	UNC 1.1/2 x 6	17121	17368
UNC Nr. 12 x 24	17115	17362	UNC 1.5/8 x 5	17122	17369
UNC 1/4 x 20	16298	16442	UNC 1.3/4 x 5	17123	17370
UNC 5/16 x 18	16299	16443	UNC 1.7/8 x 4,5	17124	17371
UNC 3/8 x 16	16300	16444	UNC 2" x 4,5	17125	17372
UNC 7/16 x 14	16301	16445	UNC 2.1/4 x 4,5	17126	17373
UNC 1/2 x 13	16302	16446	UNC 2.1/2 x 4	17127	17374
UNC 9/16 x 12	16303	16447	UNC 2.3/4 x 4	17128	17375
UNC 5/8 x 11	16304	16448	UNC 3" x 4	17128	17376

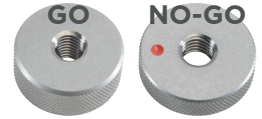


UNF



GO/NO-GO Thread Ring Gauge

Unified Fine Thread ANSI B1.1

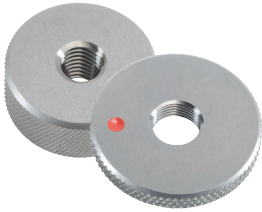


Gauge dimension:	Tolerance:	Standard:
ANSI B 1.2	2A	ANSI B1.1
Variants (23):		

Diameter /Pitch	GO Art.-No.	NO-GO Art.-No.	Diameter /Pitch	GO Art.-No.	NO-GO Art.-No.
UNF Nr. 2 x 64	17130	17377	UNF 1/2 x 20	16314	16458
UNF Nr. 3 x 56	17131	17378	UNF 9/16 x 18	16315	16459
UNF Nr. 4 x 48	16306	16450	UNF 5/8 x 18	16316	16460
UNF Nr. 5 x 44	17132	17379	UNF 3/4 x 16	16317	16461
UNF Nr. 6 x 40	16307	16451	UNF 7/8 x 14	17134	17381
UNF Nr. 8 x 36	16308	16452	UNF 1" x 12	17135	17382
UNF Nr. 10 x 32	16309	16453	UNF 1" x 14	17136	17383
UNF Nr. 12 x 28	17133	17380	UNF 1.1/8 x 12	17137	17384
UNF 1/4 x 28	16310	16454	UNF 1.1/4 x 12	17138	17385
UNF 5/16 x 24	16311	16455	UNF 1.3/8 x 12	17139	17386
UNF 3/8 x 24	16312	16456	UNF 1.1/2 x 12	17140	17387
UNF 7/16 x 20	16313	16457			

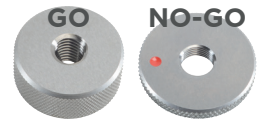


G (BSP)



GO/NO-GO Thread Ring Gauge

Pipe-thread DIN ISO 228



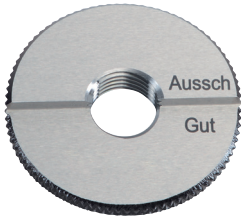
Gauge dimension: DIN EN ISO 228-2 Tolerance: A Standard: DIN ISO 228

Variants (19):

Diameter /Pitch	GO Art.-No.	NO-GO Art.-No.	Diameter /Pitch	GO Art.-No.	NO-GO Art.-No.
G 1/8 x 28	16318	16462	G 1.1/2 x 12	16327	16471
G 1/4 x 19	16319	16463	G 1.3/4 x 11	16328	16472
G 3/8 x 19	16320	16464	G 2" x 11	16329	16473
G 1/2 x 14	16321	16465	G 2.1/4 x 11	17142	17389
G 5/8 x 14	16322	16466	G 2.1/2 x 11	17143	17390
G 3/4 x 14	16323	16467	G 2.3/4 x 11	17144	17391
G 7/8 x 14	16324	16468	G 3" x 11	17145	17392
G 1" x 11	16325	16469	G 3.1/2 x 11	17146	17393
G 1.1/8 x 11	17141	17388	G 4" x 11	17147	17394
G 1.1/4 x 11	16326	16470			



NPT



Thread Ring Gauge

American tapered pipe thread, taper 1:16

Gauge dimension:

ANSI/ASME B 1.20.1

Standard:

ANSI/ASME B 1.20.1

Variants (9):

Diameter/Pitch	Art.-No.
NPT 1/8 x 27	16485
NPT 1/4 x 18	16486
NPT 3/8 x 18	16487
NPT 1/2 x 14	16488
NPT 3/4 x 14	16489
NPT 1" x 11,5	16490
NPT 1.1/4 x 11,5	17397
NPT 1.1/2 x 11,5	17398
NPT 2" x 11,5	17399



Sets

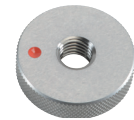
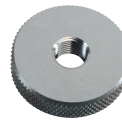
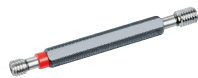


Thread plug gauges/GO Ring gauges/NO-GO Ring gauges

7-piece sets in sturdy plastic case

Gauge dimension:

Metric ISO-thread DIN 13



Contents	Plug gauge Tol. 6H Art.-No.	GO Ring gauge Tol. 6g Art.-No.	NO-GO Ring gauge Tol. 6g Art.-No.
Full set	16026	16491	16492
1 x M 3	16012	16188	16332
1 x M 4	16014	16190	16334
1 x M 5	16016	16191	16335
1 x M 6	16019	16192	16336
1 x M 8	16021	16194	16338
1 x M 10	16023	19196	16340
1 x M 12	16025	19198	16342